



Chair Members:
Rodney Palla, Chair
Harold Hanson
Gene Lundquist

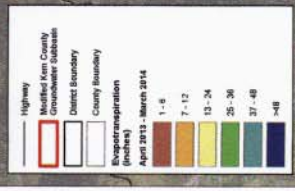
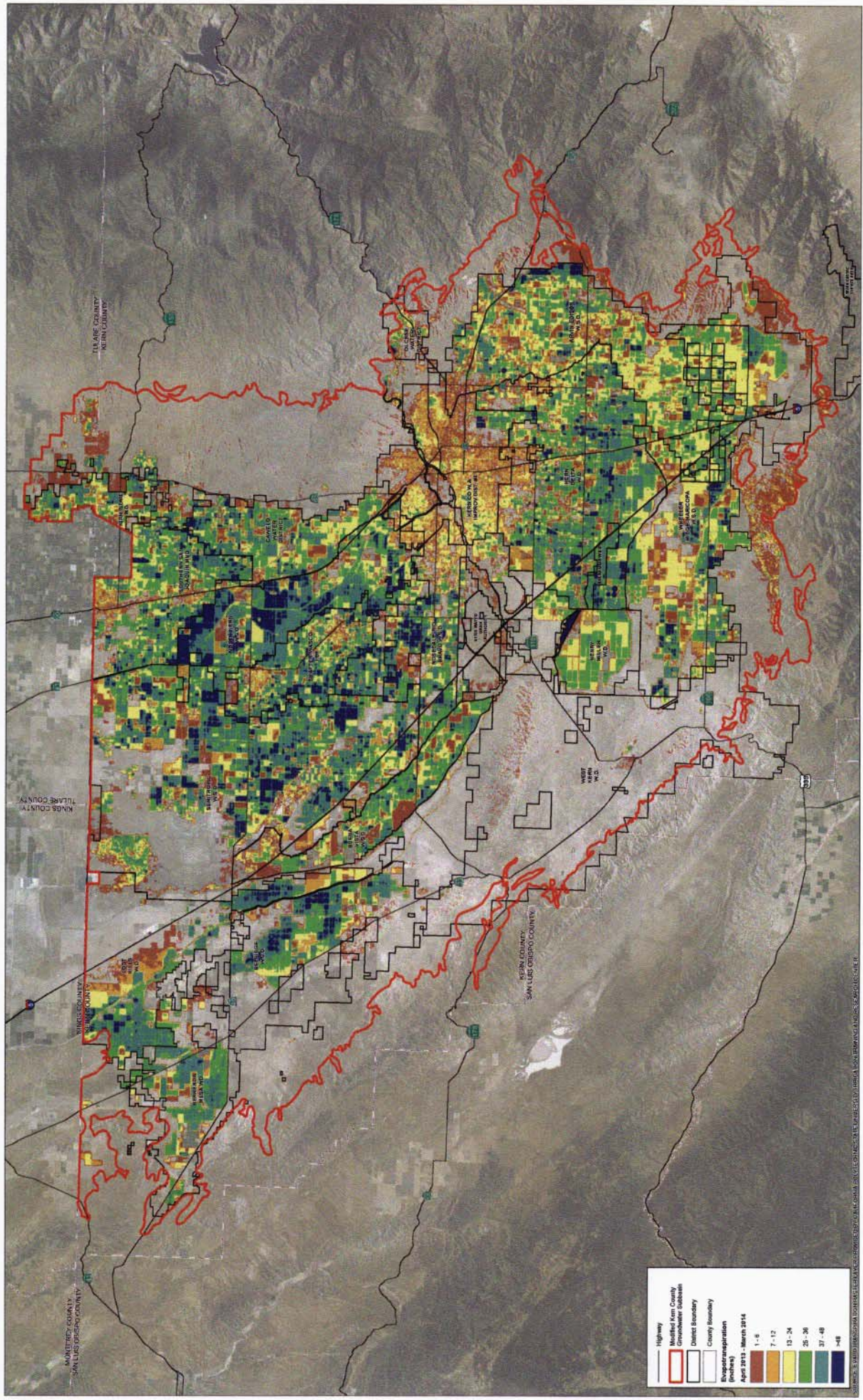
KERN RIVER GSA

Thursday, June 2, 2016
10:00 a.m.

City Hall North
1600 Truxtun Avenue, Bakersfield CA 93301
First Floor, Conference Room A

AGENDA

- 1. CALL TO ORDER**
- 2. ROLL CALL**
- 3. PUBLIC STATEMENTS**
- 4. APPROVAL OF APRIL 14, 2016 MINUTES**
- 5. NEW BUSINESS**
 - A. Correspondence Received From Post Office (City Clerk)
 - B. Review and Approval of KRGSA Bylaws (Attorneys)
 - C. Update from Management Group (Beard/Chianello/Mulkay)
 - i. Meeting with Jim Nickel
 - ii. RFP Progress
 - iii. White Paper Review
 - iv. Update on ITRC Study and KGA Activities (Beard/Chianello/Mulkay)
 - v. Cost Sharing and Consultant Agreements
 - vi. Website Address
 - D. Approval of City Finance Director as Fiscal Agent (N. Smith)
 - E. Update on GSA Status (Teglia)
 - F. Berrenda Mesa Banking Project Response (Beard/Chianello/Mulkay)
- 6. COMMITTEE COMMENTS**
- 7. ADJOURNMENT**



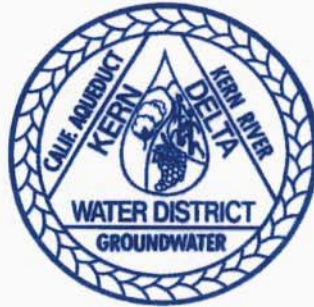
Kern Groundwater Authority
Kern County, CA
Kern Groundwater Authority



EVAPOTRANSPIRATION WITHIN THE MODIFIED
KERN COUNTY GROUNDWATER SUBBASIN
FEBRUARY 2016 DRAFT FIGURE

RECEIVE AND PLACE ON FILE
AT KRBAS MEETING OF JUNE 2, 2016
NEW BUSINESS ITEM 5.C.IV

RECEIVE AND PLACE ON FILE
AT KRGSA MEETING OF June 2, 2016
NEW BUSINESS 5.E



KERN RIVER GSA

Rodney Palla, Chair
Harold Hanson
Gene Lundquist

May 27, 2016

Honorable Mick Gleason, Chairman
Kern County Board of Supervisors
1115 Truxtun Avenue, 5th Floor
Bakersfield, CA 93301

Re: Kern County GSA

Dear Chairman Gleason and Supervisors:

This letter is in response to the Kern County Notice of Hearing to file a GSA for June 7th.

The Kern River GSA ("KRGSA") boundaries encompass land within the jurisdictional boundaries of the three primary parties (City of Bakersfield, Kern Delta Water District, and ID-4) as well as East Niles Community Services District and a portion of Oildale Mutual/North of the River Municipal Water District. No County unincorporated land outside of the above jurisdictions has been included in the KRGSA. We took great care to develop the boundaries of the KRGSA to minimize any potential overlap with other entities which may form separate GSAs for portions of the Kern County Sub-basin. In addition, the KRGSA has gone to great length to include entities that are directly involved and responsible for water resource management in the KRGSA proposed boundaries.

The KRGSA would like to make it clear that neither the KRGSA nor its founding agencies intend to usurp or otherwise impinge upon the County's land use authority or any other authority reserved for the County outside of the responsibilities provided in the Sustainable Groundwater Management Act.

KRGSA believes the County has a significant role in the SGMA process and KRGSA is willing to cooperate and discuss with the County how undistricted areas of the County may be incorporated into or managed by KRGSA. SGMA legislation does not allow for any boundary overlaps. An action by the County to form a GSA over the entire Kern Sub-basin will create an overlap and will result in all agencies that have formed a GSA, or wish to form a GSA, to be placed into a probationary state and not allowed to move forward. No one benefits from this type of action. Therefore, KRGSA urges the County to not take any action on June 7th that would result in overlap with KRGSA or other formed GSAs.

Very truly yours,

Rodney Palla
Kern Delta Water District

Harold Hanson
City of Bakersfield

Gene Lundquist
Kern County Water Agency
Improvement District No. 4

/lsc